

FOR SALE

6027 S Wentworth Avenue
Chicago, IL 60621



10,900 SF | AVAILABLE

Asking Price : Subject to Offer

Average Daily Traffic
Count: 881 Vehicles

Image Landsat / Copernicus

Building Specs

- Clear Height: 20'
- Power: 400 amps
- Loading: 3 DID (oversized)
- Parking: 53 auto; fully-secured
- Zoning: C2-1

Distances

- Immediate access to I-90/I-94 interchange
- 0.4 miles to CTA Red Line (63rd St.)
- 1.1 miles to CTA Green Line (King Drive)
- CTA #24 Bus Stop at Wentworth & 60th
- 0.3 miles to Norfolk Southern Intermodal
- 5.0 miles to McCormick Place
- 8.5 miles to Chicago Loop

Site Highlights

- Fully-secured parking lot
- Well above-average parking capabilities
- Newly renovated two story offices
- Restrooms on both floors
- Very clean warehouse space

Hugh Williams
MK Asset
224.580.2266
hugh@mkasset.com

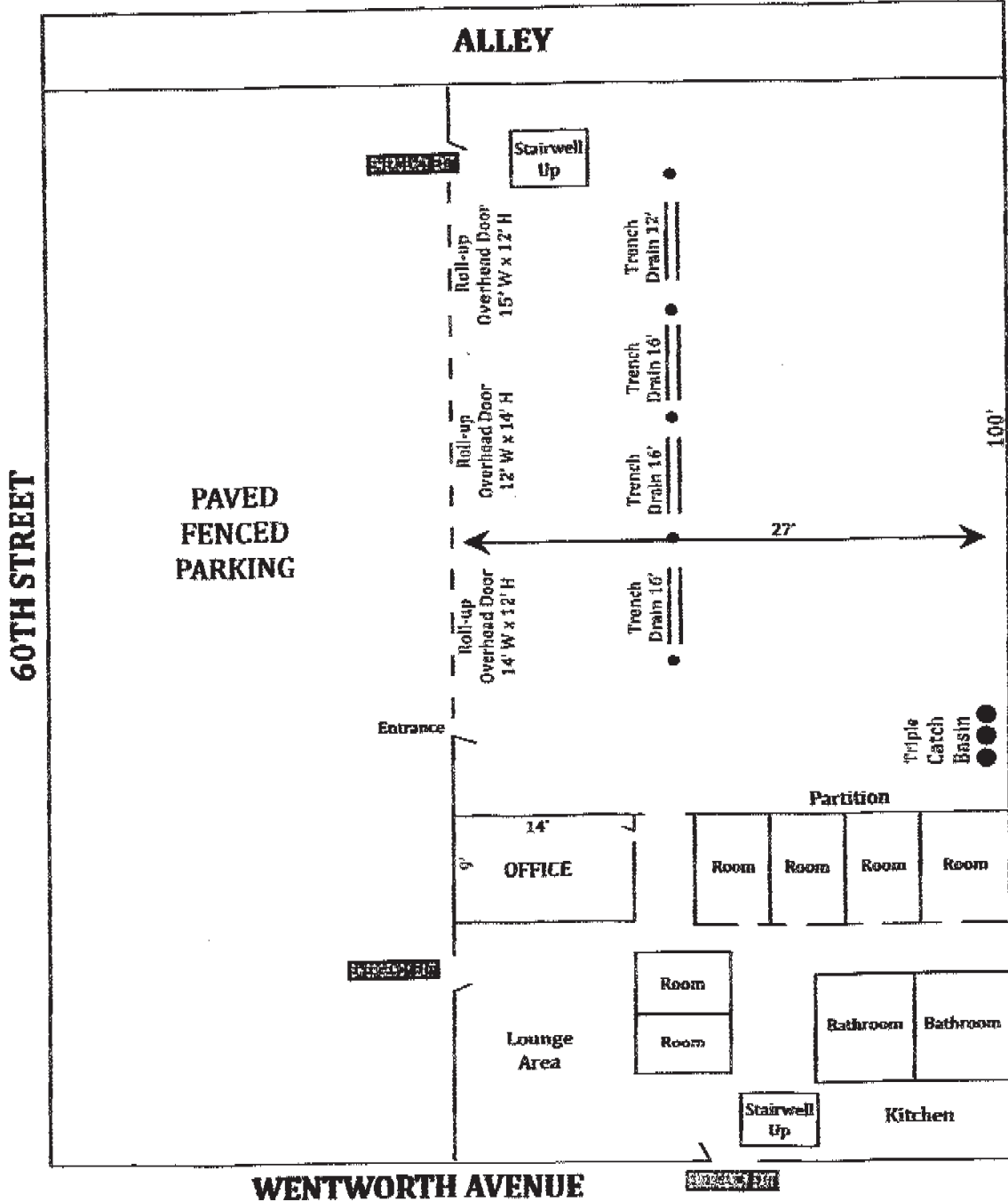
Matt Knafel
MK Asset
224.580.2267
knafel@mkasset.com

Marco Federow
MK Asset
312.805.5626
mfederow@mkasset.com

MK Asset Brokerage
1001 E Touhy Avenue Suite 300, Des Plaines, IL 60018
www.mkasset.com

FLOOR PLAN

6027 S. WENTWORTH
CHICAGO, ILLINOIS



Immediate Access to CTA

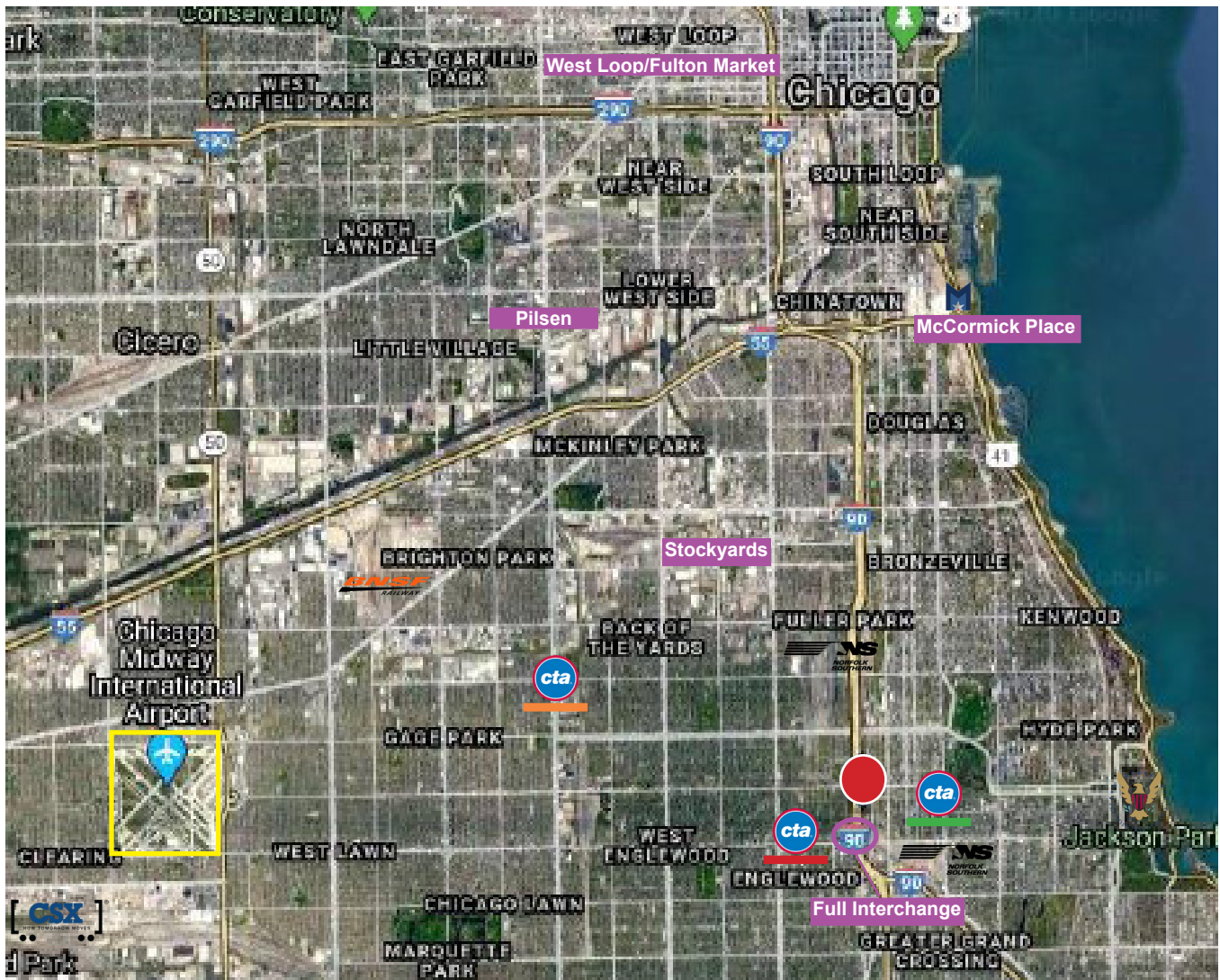


Easy Access to I-90/I-94



8.5 Miles to Downtown Chicago

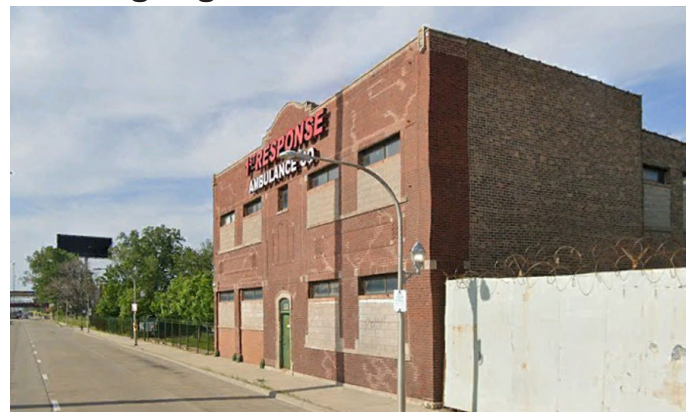
AERIAL VIEW



Site Highlights

Economic Incentives

- Enterprise Zone: 6
- Opportunity Zone
- TIF District: Washington Park
- Alderman: Jeanette B Taylor - Ward:20



Hugh Williams
MK Asset
224.580.2266
hugh@mkasset.com

Matt Knafel
MK Asset
224.580.2267
knafel@mkasset.com

Marco Federow
MK Asset
312.805.5626
mfederow@mkasset.com