



4400 S Racine Avenue, Chicago, IL 60609

A Superior Location and Rare Maintenance Facility

Situated within Chicago's coveted Stockyard's industrial district, 4400 S Racine provides immediate connectivity to rail, interstate, and air infrastructure. In addition to transportation-connectivity, the surrounding labor pool is unparalleled. This is a one-of-a-kind opportunity to occupy a site within the City of Chicago allowing for vehicle/fleet maintenance, truck/van/trailer parking, outside storage, on-site fueling, and potential for container storage.

Specifications

6.42 Acres
SITE SIZE

19,853 SF
BUILDING FOOTPRINT

7,100 SF
OFFICE AREA

12,753 SF
SHOP/MAINTENANCE AREA

16'
CLEAR HEIGHT

14
DRIVE-IN DOORS

5
MAINTENANCE BAYS

1
WASH BAY

ON-SITE FUELING STATION

PMD 8A
ZONING

Site to be re-paved by ownership

Office make-ready work

Class 6B tax incentive

Fully-secured site

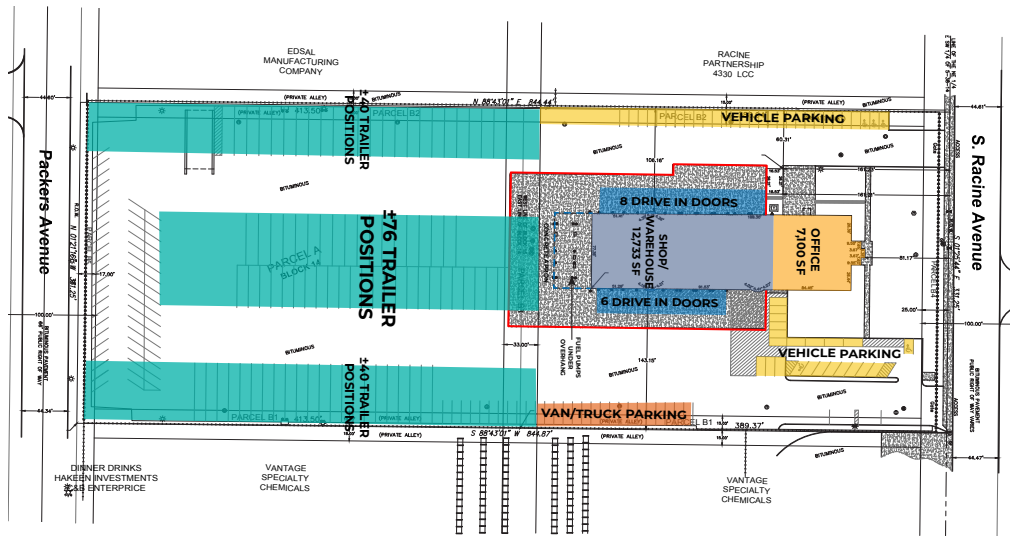
24/7 Stockyard's neighborhood security/surveillance

Fully-functioning maintenance shop

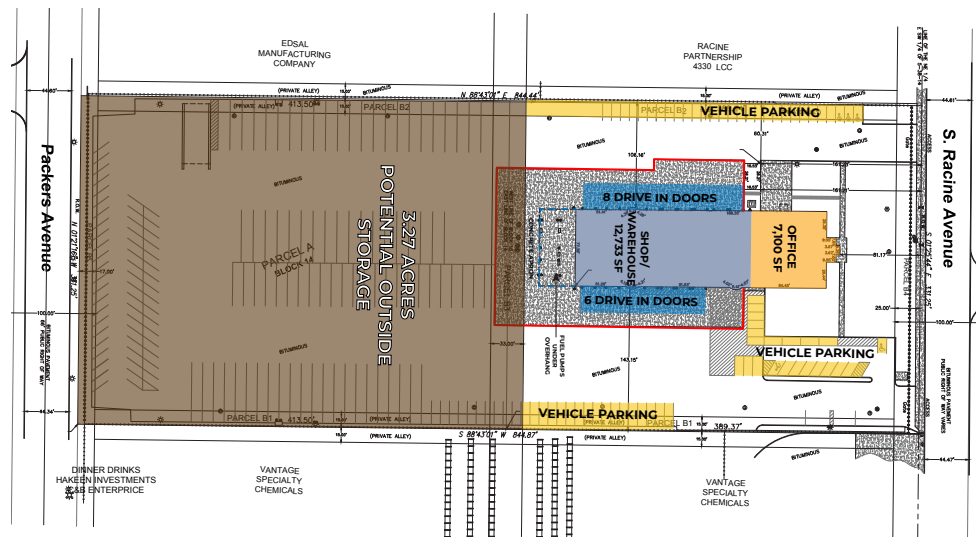




Maximum Trailer Positions



Maximum Storage



SITE AREA

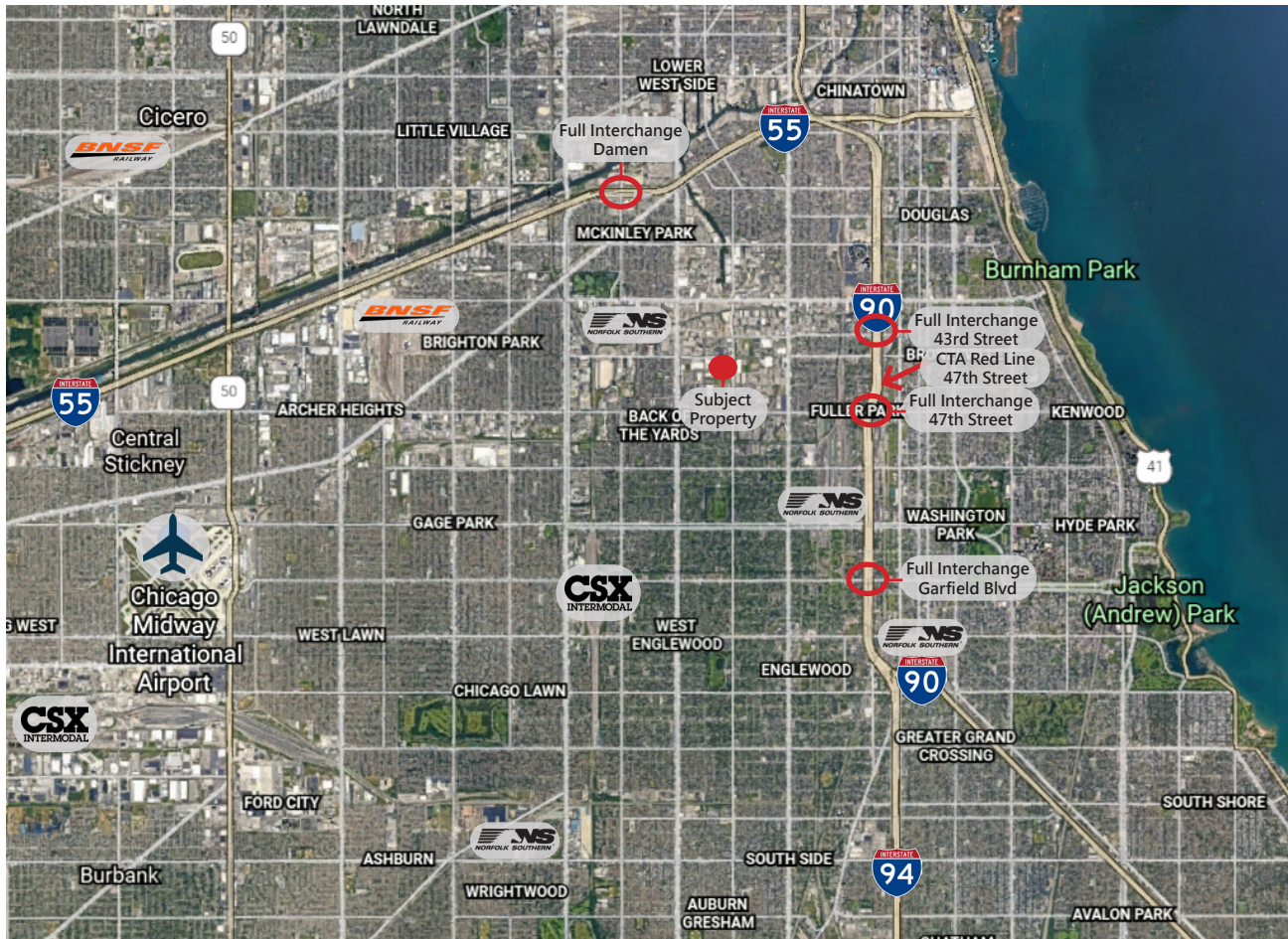
In SF **279,655 SF**
 In Acres **6.42 Acres**

PARKING

Trailers **~156 Stalls**
 Auto **~50 Stalls**

BUILDING AREA

Office **7,100 SF**
 Shop **12,733 SF**
 Total **19,833 SF**



Key Distances

- 2.0 miles to I-90/94 & 43rd Street
- 2.5 miles to I-55 & Damen Avenue
- 4.0 miles to BNSF Corwith Intermodal
- 6.0 miles to Midway International Airport
- 7.0 miles to CBD
- 11.5 miles to CSX Bedford Park Intermodal

Contacts



Hugh Williams, SIOR
224.580.2266
hugh@mkasset.com

Matt Knafel
224.580.2267
knafel@mkasset.com

John Coleman
847.257.7430
jcoleman@mkasset.com

Marco Federow
224.443.4493
mfederow@mkasset.com

Andrew Gerovasil
847.257.7429
agerovasil@mkasset.com

Brookfield Properties

Ryan Soule
VP - Asset Management, Logistics
ryan.soule@brookfieldproperties.com